

NOTE

- ① Exact CMS message/abbreviation to be reviewed and approved by the City.
- ② Exact CMS installation locations are to be field verified and confirmed by others.
- ③ All CMS are to be in place and active at least 7-days prior to construction stage.
- ④ All CMS are to be in place and active for duration of construction stage.

LEGEND

— Road Closure

- ①** CMS-1 Placerville Road Closed Use Prairie City Road
- ②** CMS-2 Placerville Road Closed Use Scott Road
- ③** CMS-3 Placerville Road Closed Use Scott Road
- ④** CMS-4 Placerville Road Closed Use Scott Road Businesses Open
- ⑤** CMS-5 Placerville Road Closed to Through Traffic Business Open Use Scott Road

● Post Mounted Sign

- D3-1
- SC3 (CA)
- M4-9 (R)
- M4-9 (L)



FOLSOM RANCH ROAD CLOSURES

STAGE 1 Traffic Control Plan Overview

NOTE

- ① Exact CMS message/abbreviation to be reviewed and approved by the City.
- ② Exact CMS installation locations are to be field verified and confirmed by others.
- ③ All CMS are to be in place and active at least 7-days prior to construction stage.
- ④ All CMS are to be in place and active for duration of construction stage.

LEGEND

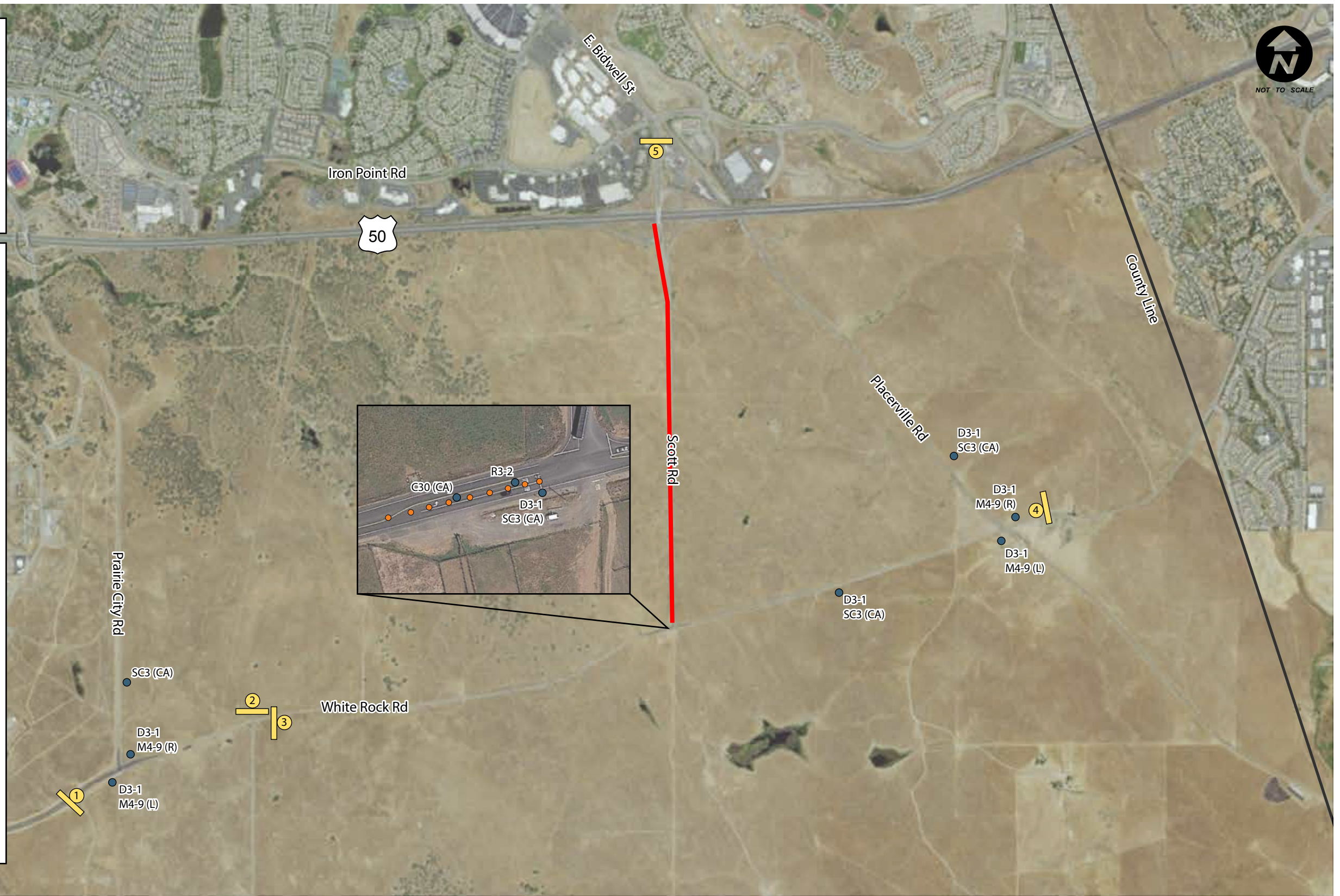
— Road Closure

①	CMS-1	Scott Road Closed Use Prairie City Road
②	CMS-2	Scott Road Closed Use Prairie City Road
③	CMS-3	Scott Road Closed Use Placerville Road
④	CMS-4	Scott Road Closed Use Placerville Road
⑤	CMS-5	Scott Road Closed Use Placerville Road

●●● Cones @ 25' Spacing

● Post Mounted Sign

R3-2	
D3-1	
SC3 (CA)	
M4-9 (R)	
M4-9 (L)	
C30 (CA)	









FOLSOM RANCH ROAD CLOSURES

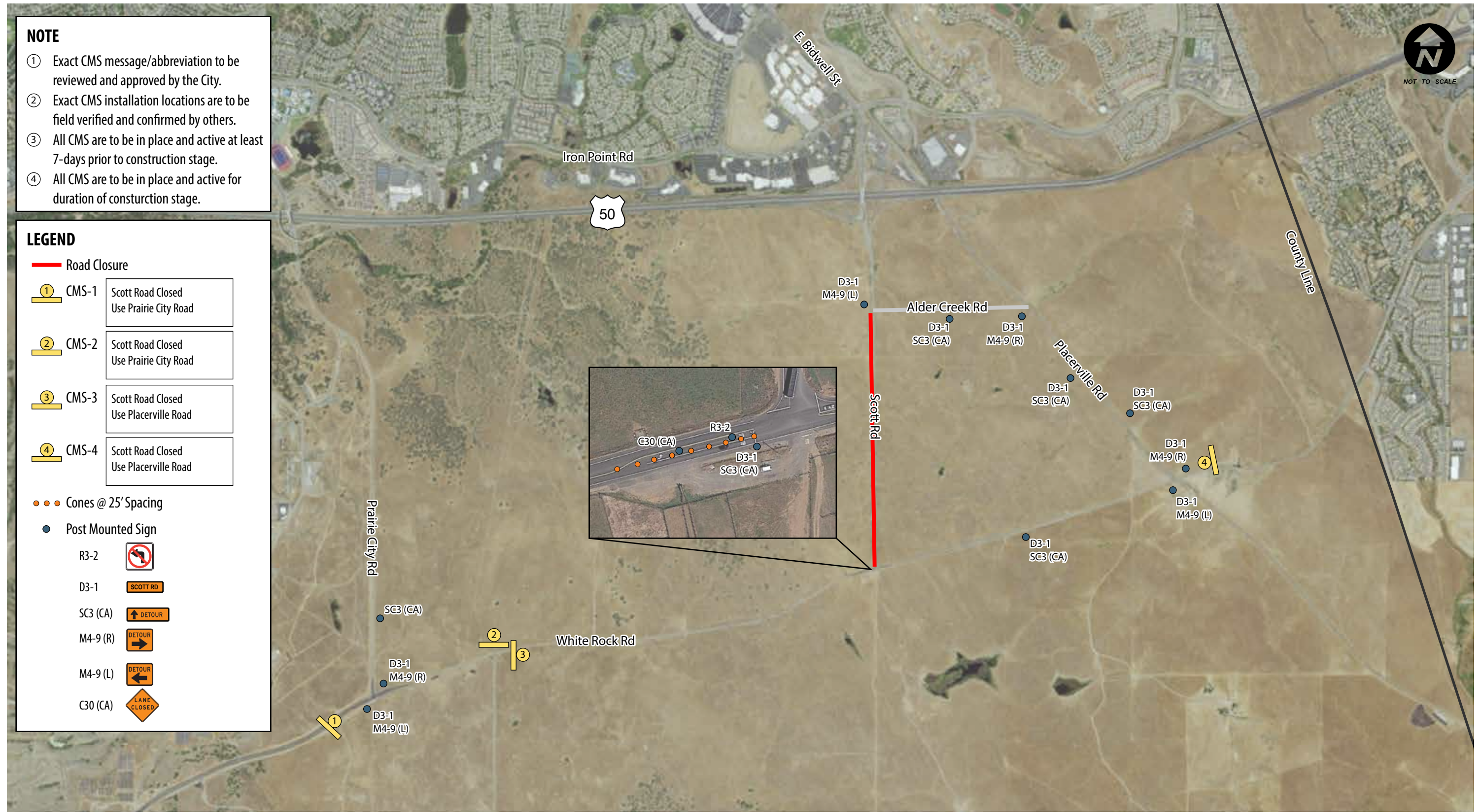
STAGE 2 Traffic Control Plan Overview

NOTE

- ① Exact CMS message/abbreviation to be reviewed and approved by the City.
- ② Exact CMS installation locations are to be field verified and confirmed by others.
- ③ All CMS are to be in place and active at least 7-days prior to construction stage.
- ④ All CMS are to be in place and active for duration of construction stage.

LEGEND

- Road Closure
- ① CMS-1 Scott Road Closed Use Prairie City Road
- ② CMS-2 Scott Road Closed Use Prairie City Road
- ③ CMS-3 Scott Road Closed Use Placerville Road
- ④ CMS-4 Scott Road Closed Use Placerville Road
- Cones @ 25' Spacing
- Post Mounted Sign
- R3-2 
- D3-1 
- SC3 (CA) 
- M4-9 (R) 
- M4-9 (L) 
- C30 (CA) 



FOLSOM RANCH ROAD CLOSURES

STAGE 3 Traffic Control Plan Overview